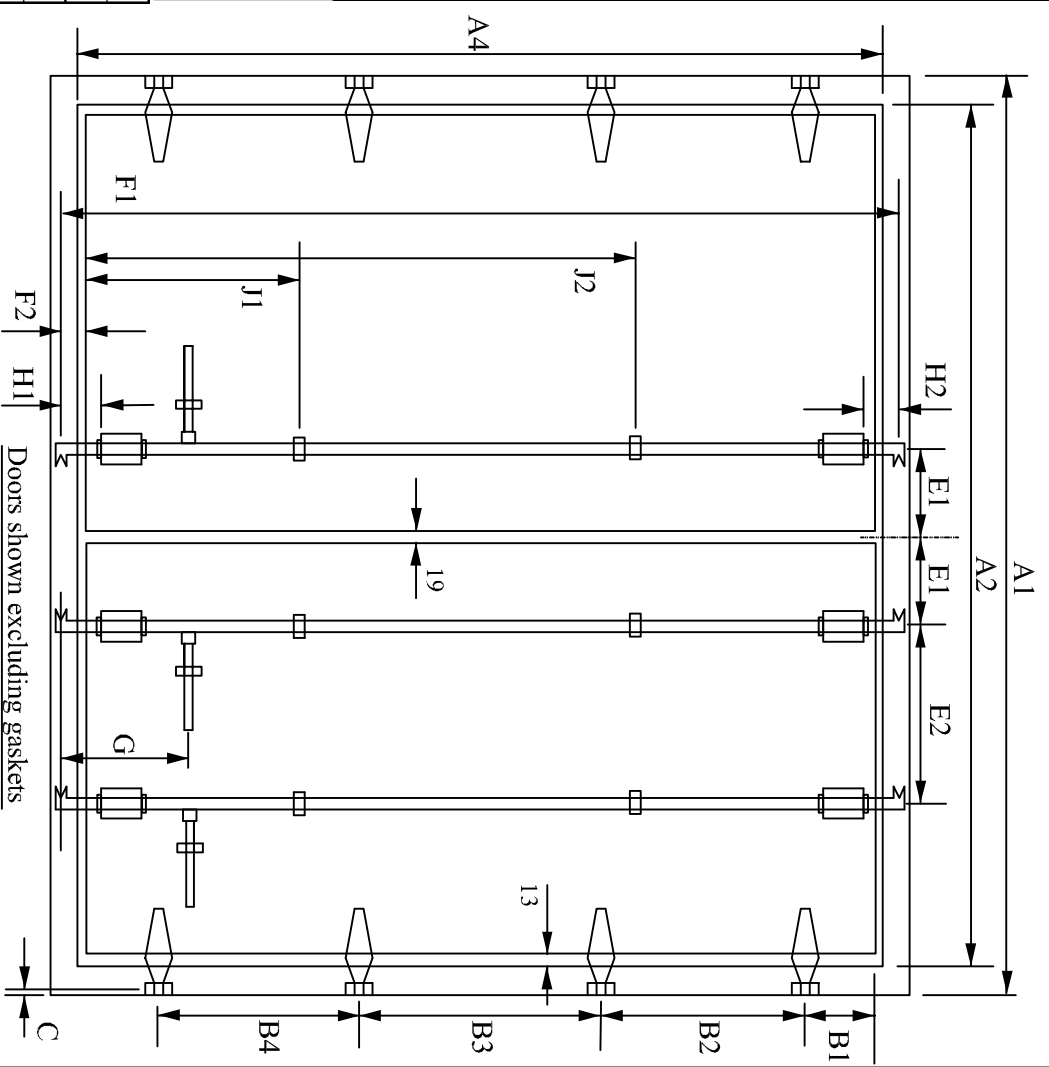


<b>Frame</b>	Please Specify in mm.				
A1 Overall width of frame					
A2 Internal aperture width					
A3 Pillar width [= (A1 - A2) / 2] and type					
A4 Internal aperture height					
<b>Hinges</b>	B1	B2	B3	B4	(B5)
B Hinge centres (B1 from door top)					
C Hinge pin centre to pillar edge	to panel edge (= A3 + 13 - C)				
<b>Lockrods</b>	Left 1	Left 2	Right 1	Right 2	
E1 Inner lockrod centre from frame centre					
E2 2nd lockrod spacing (2 locks/door only)					
F1 Cam centres					
F2 Lower cam centre from door bottom*					
G Handle centre line from cam centre					
J1 Lower small bracket position*					
J2 Upper small bracket position*					
* Dimensions from edge of door panel					
<b>Please Note Unless Otherwise Specified:</b>					
1 Panel height excl. gaskets = A4 - 25 mm (12.5 mm gap top & bottom)					
2 Panel width excl. gaskets = (A2 - 45) / 2 mm (gaps 13 sides, 19 centre)					
	Typical Example	Pls Specify			
No. Lockrods/door	2				
No. Hinges/door	4				
Lockrod system	Bloxwich B2000 MN				
Hinge blade	BCP 12594				
Hinge bracket	BCP 14149				
Brackets supplied	Yes				
Hinge pin	Stainless Bolt/Nyloc Nut				
Lockrods fitted	Fully				
Hinges fitted	Fully				
Hardware Finish	Zinc Plated				
Hinge fasteners	Z/P Bolt/Nyloc nut				
Lockrod fasteners	Z/P Bolt/Nyloc nut				



NLS No.....

Signature.....

Purchase Order No.....

Date.....

Contract/Job.....

Normanton Laminating Services Ltd  
 Lincoln Road, Pocklington Airfield  
 Industrial Estate, Pocklington, E. Yorks.  
 YO42 1NR. Web: www.normanton.co.uk  
 Tel. 01759 322160; Fax. 01759 322170

