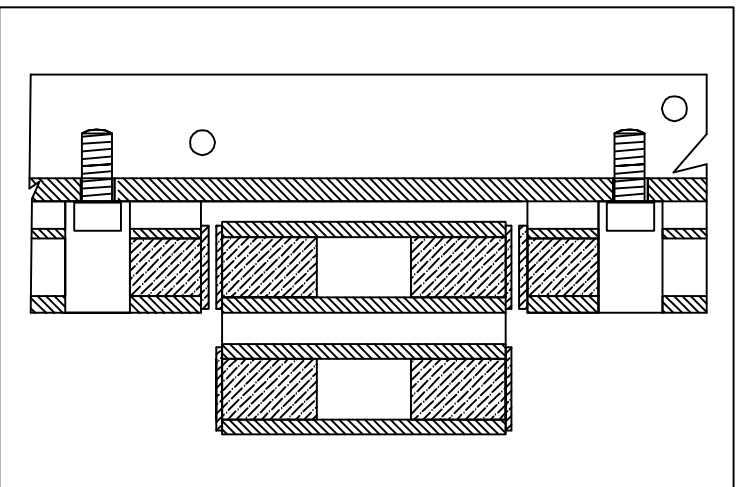
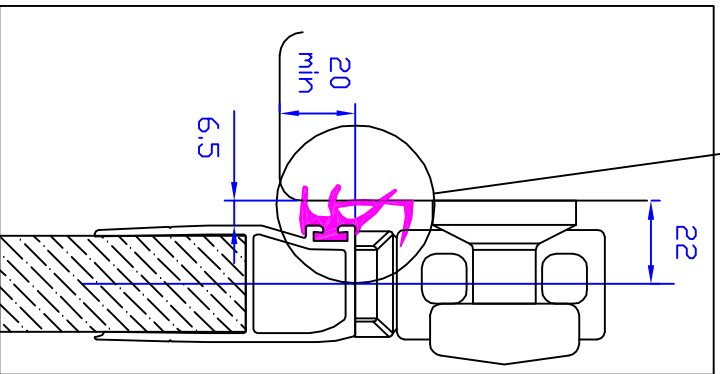
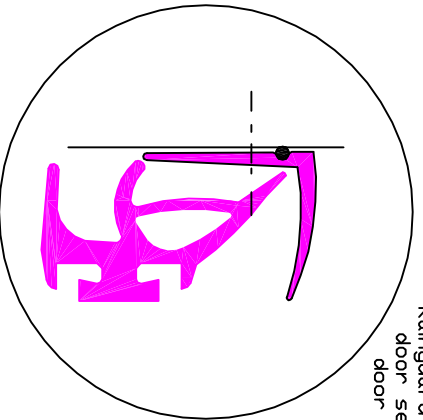
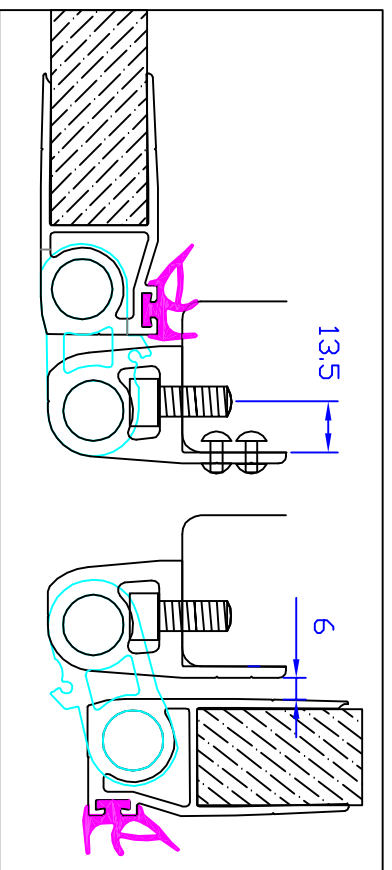


Rainguard fitted in one piece along full body width behind top door seal against header as shown. Set height such that door seal passes just below flexible 'flipper' without catching/curling rubber under.

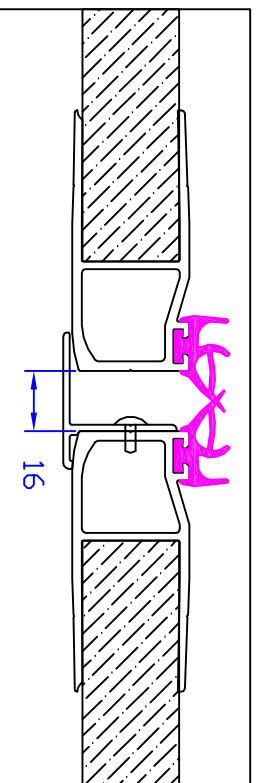
Ensure rainguard securely fitted using suitable stainless fasteners, max 5mm dia, along full width and suitable sealant bead of approx. 3 mm is included as shown in 'V' groove between rigid pvc carrier and face of header.



Side view section hinge support, hinge blade open 90°. NB shorter plastic bush in support profile. Drill and pin (min. x2) to secure 12mm hinge rod in support profile using pins provided. Ensure pin held securely both ends and seal/fill pin holes with sealant.



Section showing hinge arrangement in closed and 270° open positions. Fix hinge support profile to pillar using 2 alternating rows of rivets at 250mm centres along the two drilling lines. Additionally for heavier duty applications, M8 caphead bolts should be placed above and below each hinge using the holes provided.




Ensure central gap between doors at meeting edge is correctly and consistently set.

NB Where centre seal 'T' section supplied loose (for deliveries outside mainland UK), ensure it is correctly fitted to required door using suitable rivets or screws through stem of 'T' into edge of door capping at approx. 500mm spacings or less

Fit door to give adequate overlap of the seals along the top and bottom of the door frame. Ensure that the door overlaps the frame by a minimum of 20mm, particularly at the top of the door. Allow extra for radially on frame members.

THIS DOCUMENT AND THE COPYRIGHT THEREOF ARE THE PROPERTY OF NORMANTON LAMINATING SERVICES LTD AND MAY NOT BE USED COPIED OR DISCLOSED TO ANY THIRD PARTY WITHOUT WRITTEN AUTHORIZATION.

Designed by **DNO** File name **Date** 23/06/05 **Scale** NTS **Article No.**

 NORMANTON Specialist Panel Engineers	Normanton Laminating Services Ltd Lincoln Road Airfield Industrial Estate, Pocklington E Yorks YO44 1NR Tel: 01759 322160, Fax 01759 322170 Website: www.normanton.co.uk email: sales@normanton.co.uk	Drg. No. SM00THLINER-3-FITTING.(CONSIDERATIONS).(ASP)	Edition A	Sheet 1/1
	THIS DOCUMENT AND THE COPYRIGHT THEREOF ARE THE PROPERTY OF NORMANTON LAMINATING SERVICES LTD AND MAY NOT BE USED COPIED OR DISCLOSED TO ANY THIRD PARTY WITHOUT WRITTEN AUTHORIZATION.			